

## The Natural Choice



 **Finlog**

Transportable Log Homes  
from Finland

PRELOC

**Finlog are** proud to introduce you to their range of 88mm log transportable buildings. Built to exceed BS3632 (mobile home standard). All our buildings are built to the same exacting standard.

Please browse through our standard designs to find a layout to suit your needs. These designs are flexible or we can design a home just for you.

Whether you need a single building for a relative to stay close by or are planning something on a larger scale, Finlog can supply your needs.

Our design brief is quality: the result is a superior 88 mm laminated wall constructed building (choice of log sizes) which we are proud to guarantee for 6 years. Laminated timber is much stronger and stable than non-laminated. This concept is carried through even to doors and window frames.

### Why Finlog?

Each Finlog building is made to last, who else gives a 6 year guarantee?

#### Standard features include:

- 88mm laminated log walls
- Rafter roof system with up to 200mm of insulation
- Metal roof tiles with a 15 year guarantee
- Up to 100mm of floor insulation.
- Laminated doors and windows
- All timber used is from close grained varieties
- Option of composite or wood balustrades and decking
- Comprehensive list of options
- Low maintenance organic coatings

### Developers and Leisure Parks

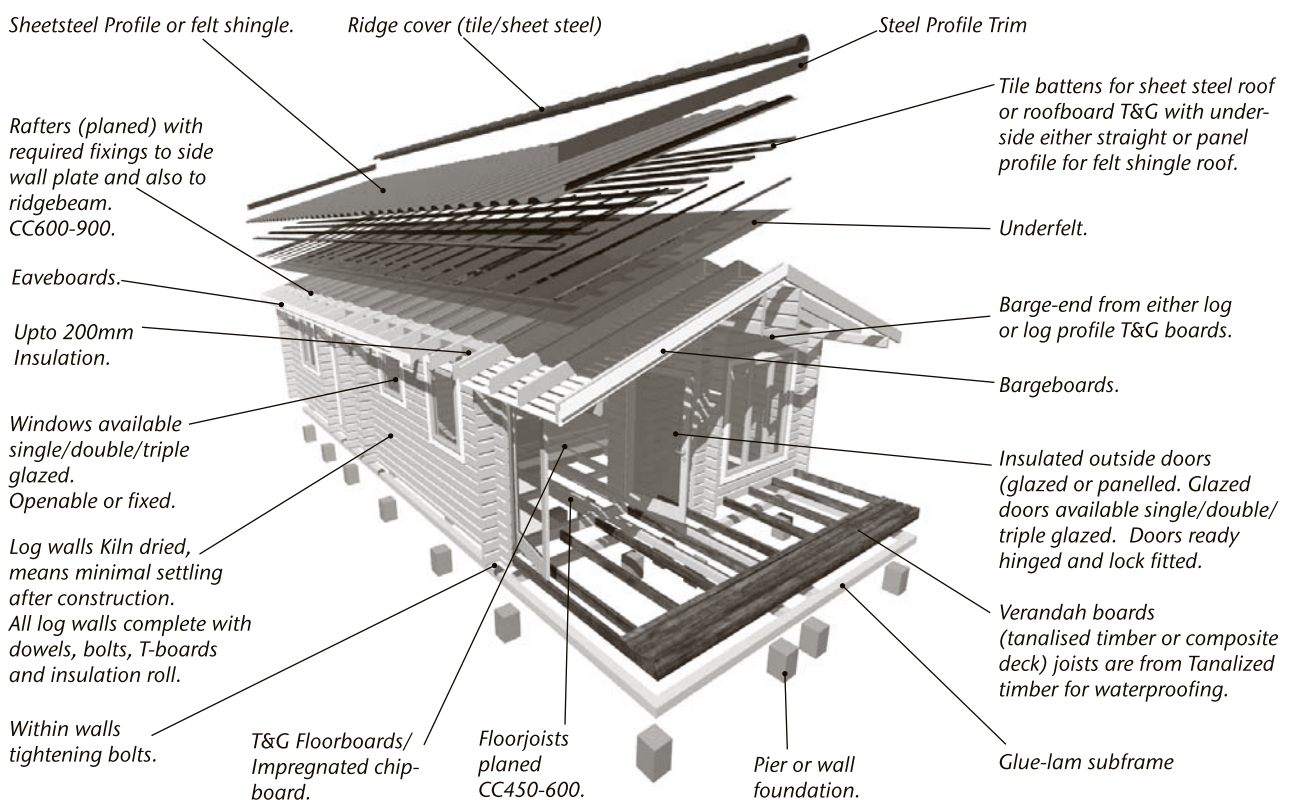
- Bespoke designs or standard
- Higher quality – better rewards
- Low maintenance
- Maintenance contracts
- Guaranteed
- More repeat business

### Relatives Annexe

Comfortable log homes that can be made with the elderly in mind, ie. wider doors, hearing loops etc.

### Holiday Homes

Make more of your holiday time, cool in summer, warm and cosy through the winter months.

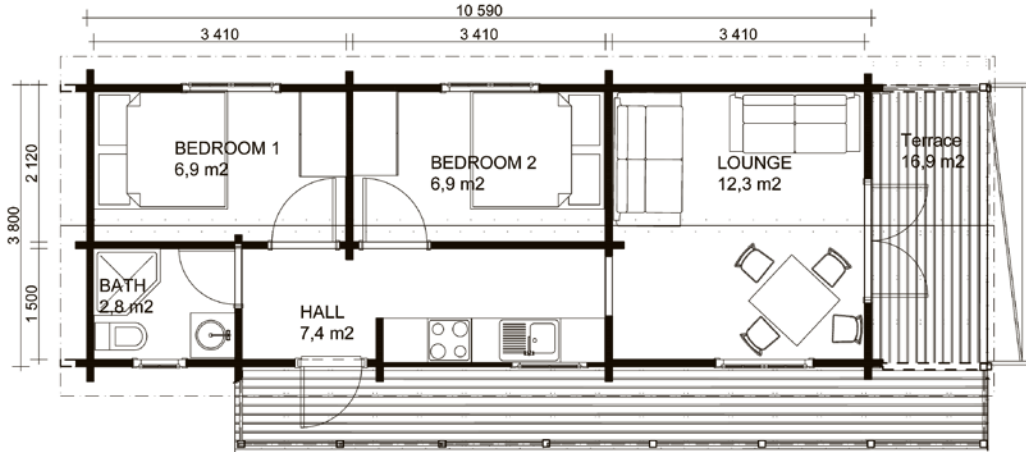


# Orkney

Floor area 40,2 m<sup>2</sup>  
 Terrace 16,8 m<sup>2</sup>  
**Total 57 m<sup>2</sup>**

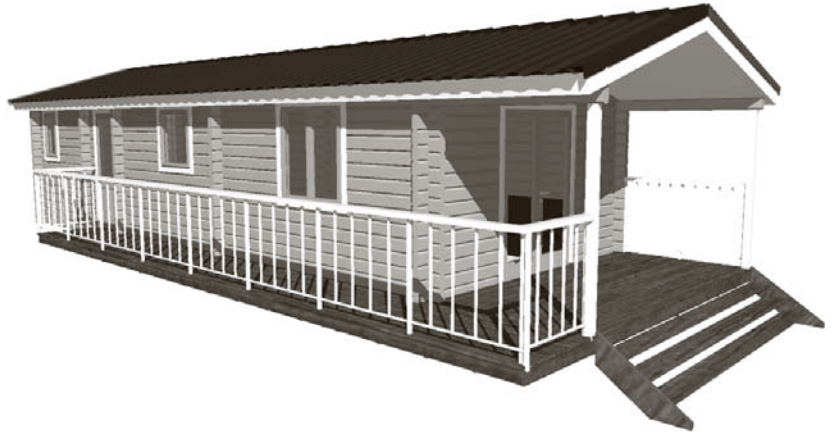


*The Finlog Orkney provides a very comfortable space for four adults or a family of six with a sofa bed. A spacious kitchen leads to all rooms and onto the optional terrace.*

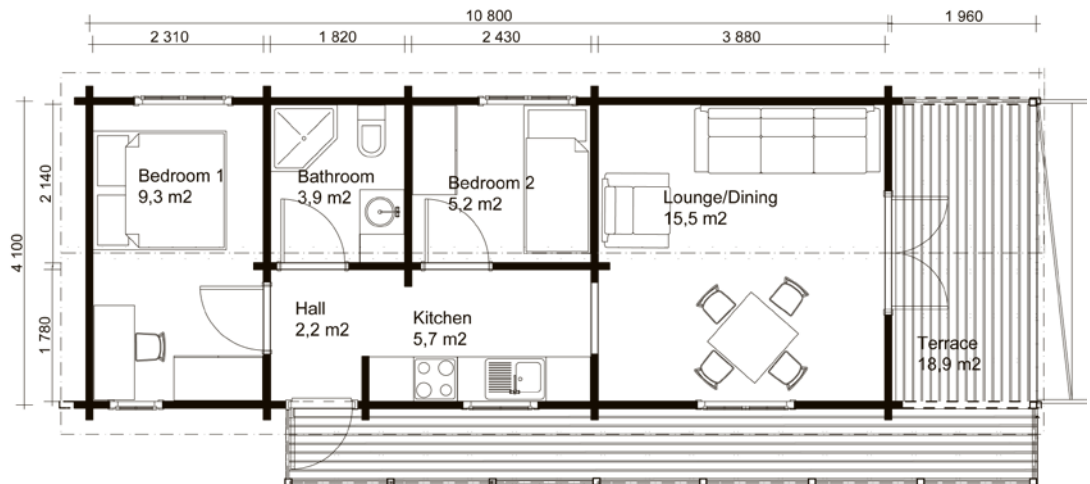


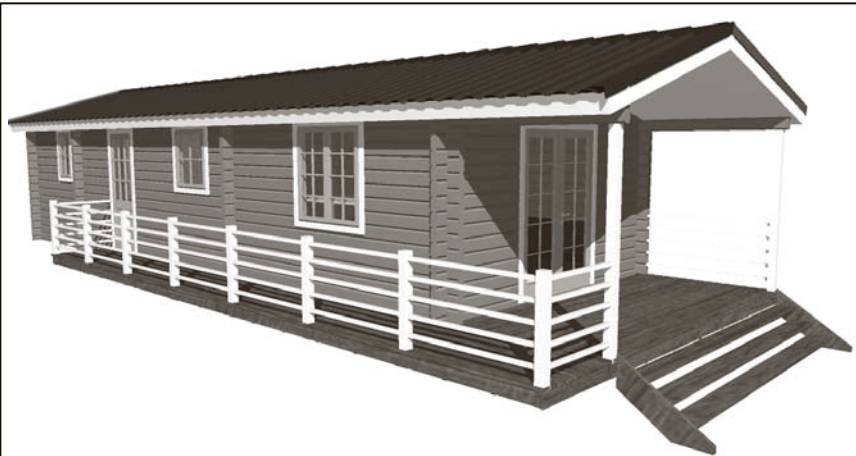
# Highland

Floor area 46 m<sup>2</sup>  
 Terrace 19 m<sup>2</sup>  
**Total 65 m<sup>2</sup>**



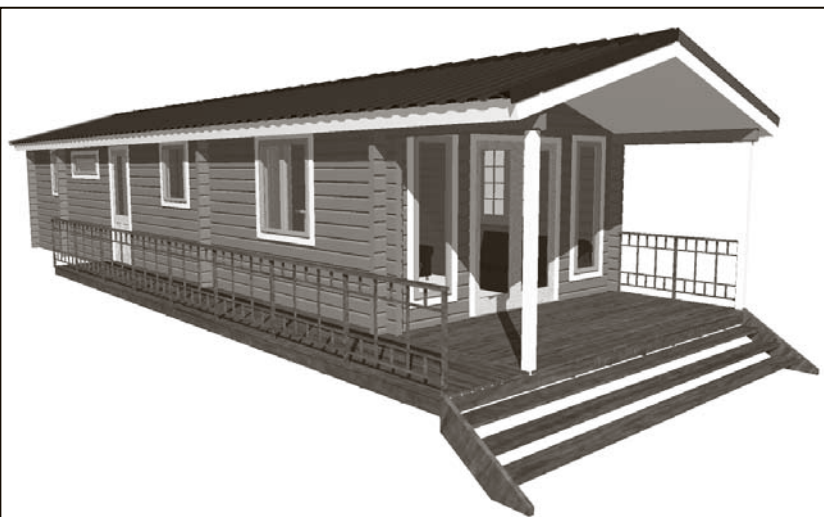
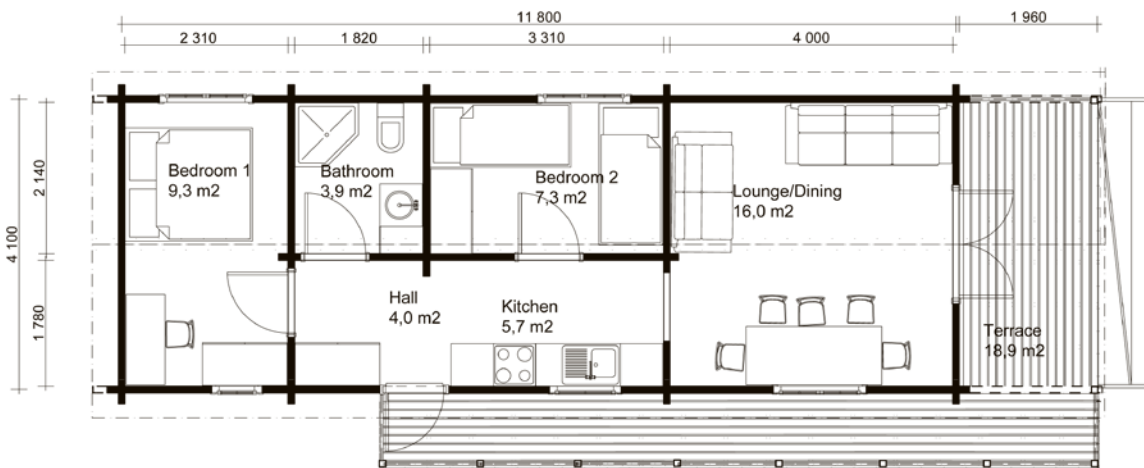
*A Highland log cabin gives a luxurious master bedroom, with room for a shower and a spacious bunk room, allowing more space to relax in the lounge area.*





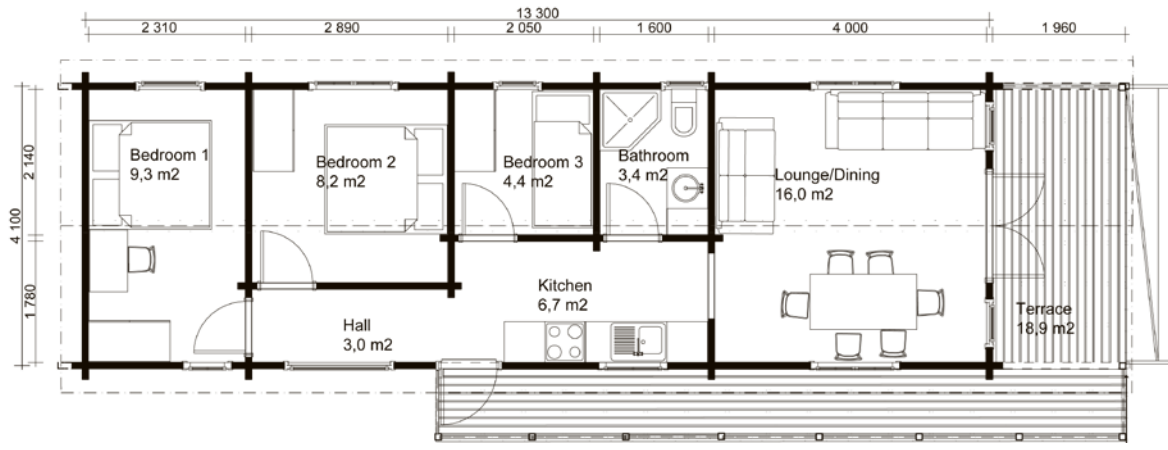
<b>York</b>	
Floor area	50 m <sup>2</sup>
Terrace	19 m <sup>2</sup>
<b>Total</b>	<b>69 m<sup>2</sup></b>

*A versatile design allows for two bunks in the 2nd bedroom giving mum and dad space in their bedroom while retaining a lovely large lounge area with French doors leading to the great outdoors, a hall with space for all those coats and shoes rounds of a great down to earth layout.*



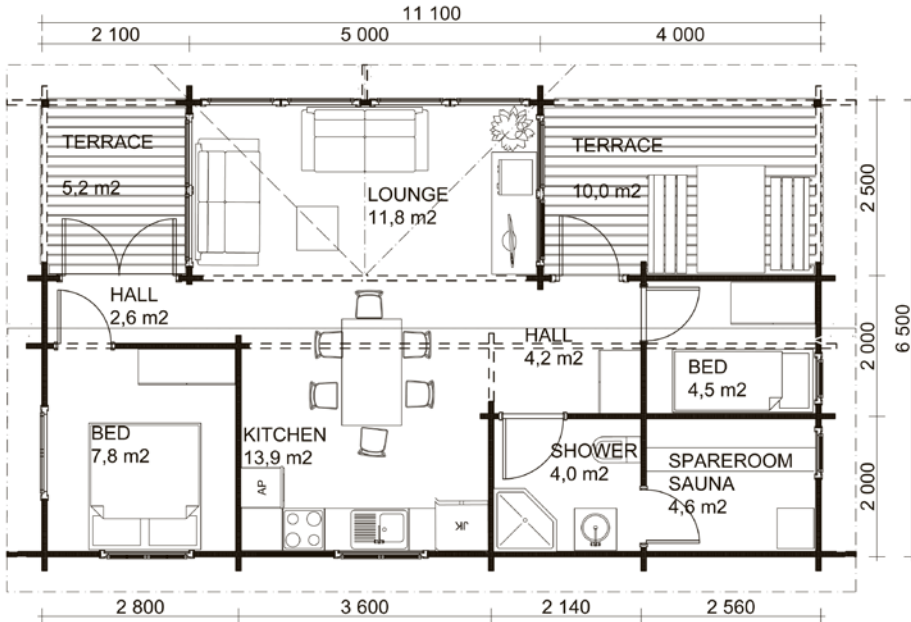
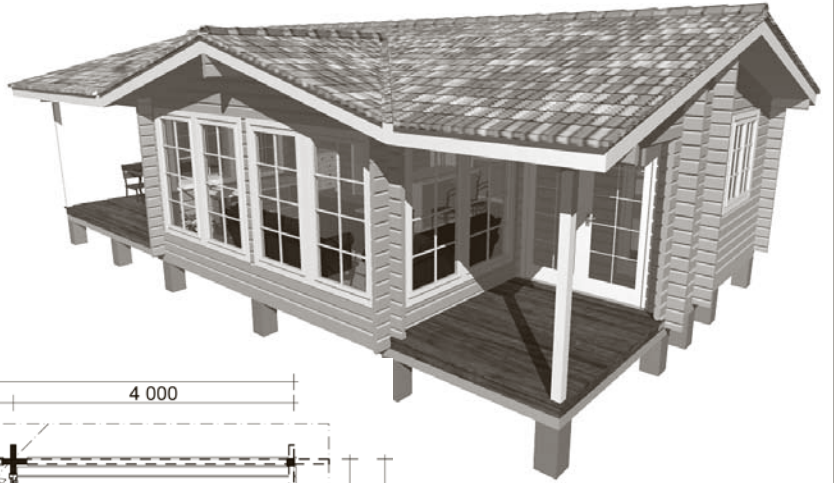
<b>Lincoln</b>	
Floor area	56 m <sup>2</sup>
Terrace	19 m <sup>2</sup>
<b>Total</b>	<b>75 m<sup>2</sup></b>

*With careful furnishing, the Lincoln can provide for four adults and 4 children or as an option the 3rd bedroom can become a luxury bathroom, the choices are endless.*



# Medway

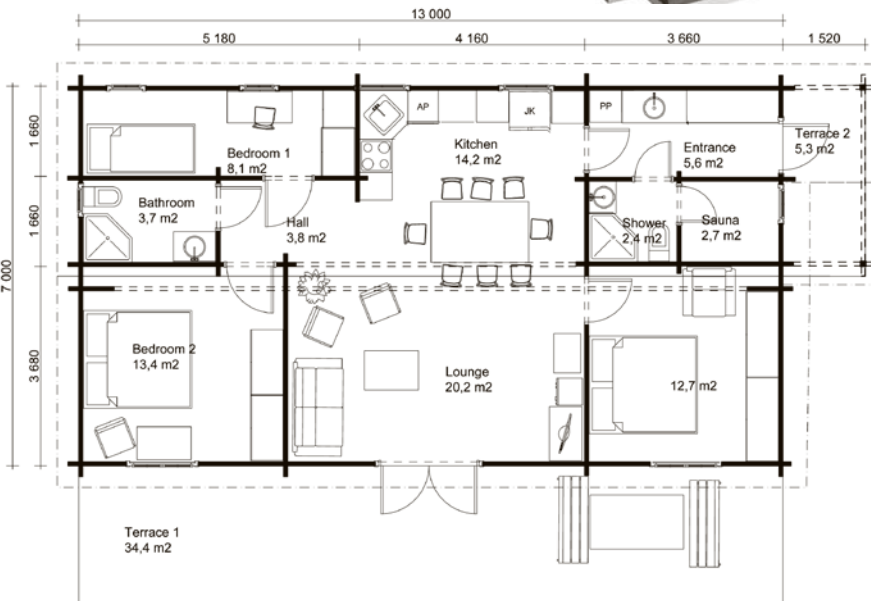
Floor area 57 m<sup>2</sup>  
 Terrace 15,2 m<sup>2</sup>  
**Total 72,2 m<sup>2</sup>**



*With a lounge bathed in light the Medway has been designed with easy living in mind. Choose the sauna option or go for the master bedroom and en-suite. A generously sized deck for entertaining and a covered entrance deck complete a great design.*

# St. Ives

Floor area 91 m<sup>2</sup>  
 Terrace 39,7 m<sup>2</sup>  
**Total 130,7 m<sup>2</sup>**



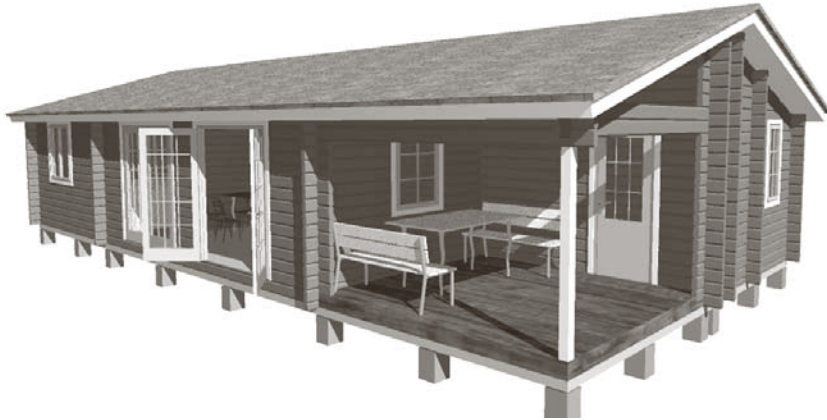
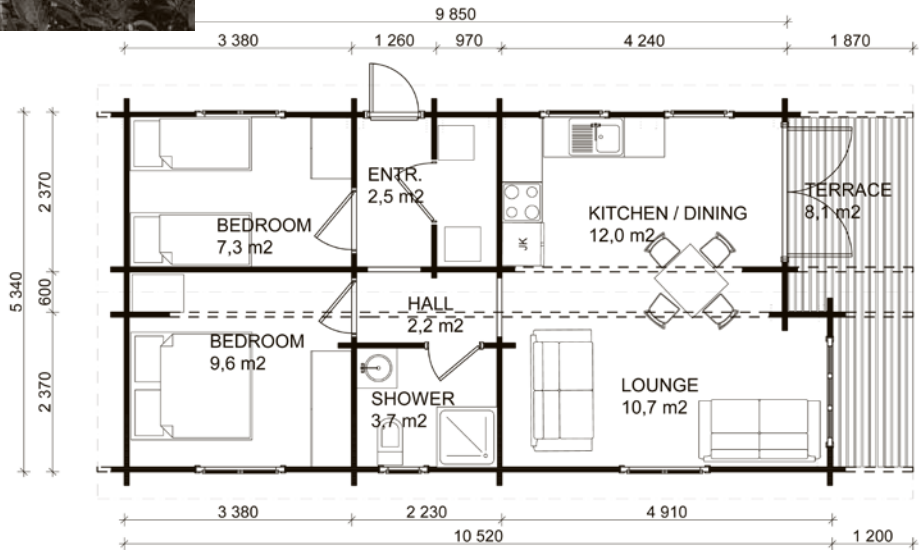
*Stand out from the crowd with our innovative 'St Ives', a favourite on the continent. A lovely 'cabin' porch leads to a lobby, one to hide away muddy shoes and wash the kids hands before tea. The integral shower and sauna is a feature the Finns love, but may also become a storage room, or en-suite. A great size open plan living area divides the bedroom into separate sides of the home for added privacy.*



## Norfolk

Floor area 54,5 m<sup>2</sup>  
 Terrace 8,1 m<sup>2</sup>  
**Total 62,6 m<sup>2</sup>**

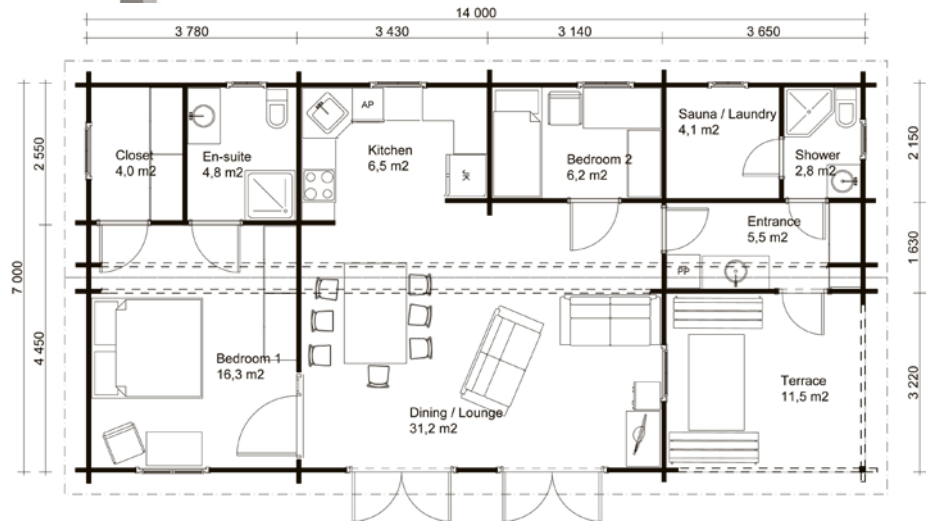
*The Norfolk makes the perfect holiday residence or permanent home. With a practical utility room, 2 bedrooms and triple aspect living area you will feel at home straight away in this true log home*



## Paignton

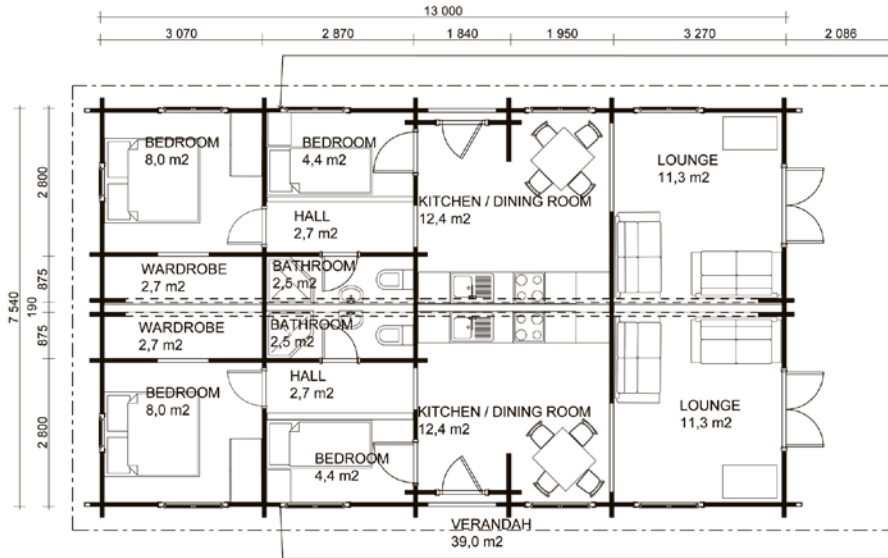
Floor area 86,5 m<sup>2</sup>  
 Terrace 11,5 m<sup>2</sup>  
**Total 98 m<sup>2</sup>**

*Luxury living for a family of four, entertain on the covered verandah or choose to dine in the living area with light flooding in from the pairs of French doors. A walk in wardrobe and sauna/laundry rounds of a great layout.*



# Pembrokeshire

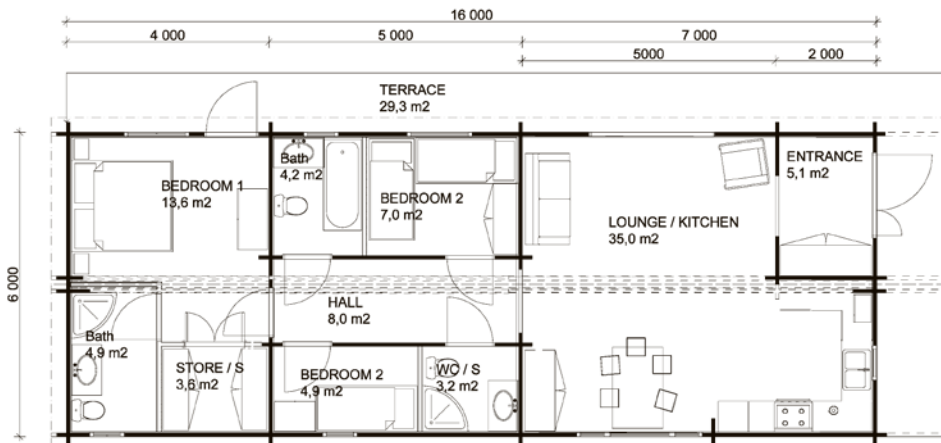
Floor area 82 m<sup>2</sup>  
 Terrace 34 m<sup>2</sup>  
**Total 116 m<sup>2</sup>**



*The Pembrokeshire was designed for a client that had regular requests from holiday makers for accommodation adjacent to one another. Ideal for two families or one large family, each can have their own space while keeping an eye on the kids, a great design, so we are told, time and time again*

# Annan

Floor area 96 m<sup>2</sup>  
 Terrace 29,3 m<sup>2</sup>  
**Total 125,3 m<sup>2</sup>**



*A top end design with en-suite master bedroom with spacious bathroom with a vast walk in robe, family bathroom, laundry and entrance cloakroom. The kitchen, bigger than most houses is perfect for entertaining on a luxury scale.*



## Standard spec

- 88mm laminated log (slow grown varieties)
- Rafter roof system (7 component)
- 150 - 200mm ceiling insulation
- Metal tile system (15 year guarantee)  
choice of colours
- 100mm floor insulation
- Organic coatings
- Laminated doors and windows
- Glue laminated beam base
- Barge, soffit – fascia boards

## Popular Optional Extras

- 70 mm logs – 250 mm laminated logs
- Round logs 150 – 260 mm
- Door gable
- Folding patio doors
- seamless guttering
- Composite non slip decking and balustrades
- 2 coat wood stain system (for exposed areas)
- Trailer mounted
- Fire proofing
- Underfloor heating option
- Organic insulations
- Plaster-boarded inside walls
- Triple glazing
- Larger windows
- Redwood or Oak flooring
- Complete interiors



### Head Office:

#### Finlog

Mulberry Lodge,  
1a Eversleigh Road,  
New Barnet,  
Hertfordshire,  
EN5 1NE.  
Phone: 020 8449 7028  
Fax: 020 8449 7047  
Email: [info@finlog.co.uk](mailto:info@finlog.co.uk)  
[www.finlog.co.uk](http://www.finlog.co.uk)

### North of England/ Scotland show room:

Unit 10 Harker  
Industrial Estate,  
Harker,  
Carlisle,  
CA6 4DS.  
P. 01228 647002

### Factory in Finland:

Preloc Oy Ltd.  
Teollisuuskari 3,  
FI-54915  
Saimaanharju,  
FINLAND  
[www.preloc.fi](http://www.preloc.fi)

